



INTERNATIONAL

The key to your profit!



Feedmanagement PS/Layers

Leon Schouren
Global Technical Service
schouren@hn-int.com

What is the reason to have good feed management?

1. Target to feed ALL the birds the same quantity, and in this quantity the COMPLETE balanced feed.
2. To restrict feed
3. To keep the feeders full all day long

1

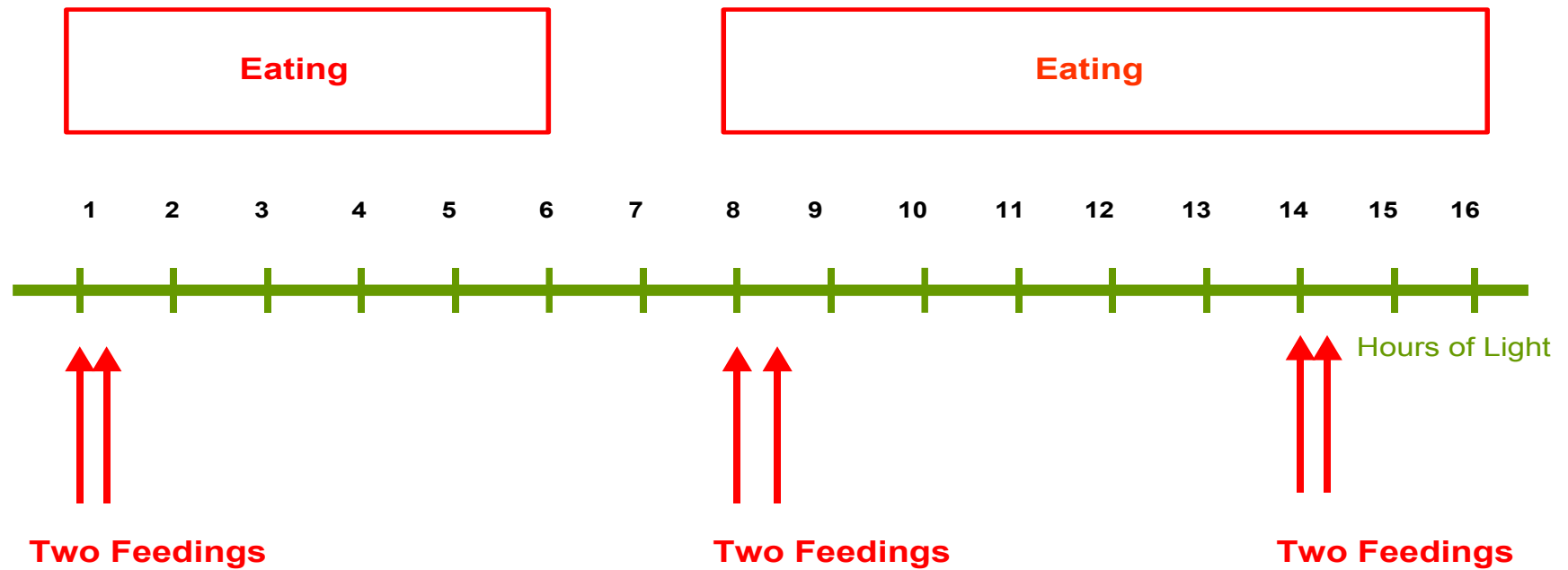
2

3

Feedmanagement

Stack Feeding

(Example for Cage Housing with 3 Feeding Periods)



Feedmanagement (Old story!!)

Why do we need to train our ps/layers to empty the feeders ones a day:

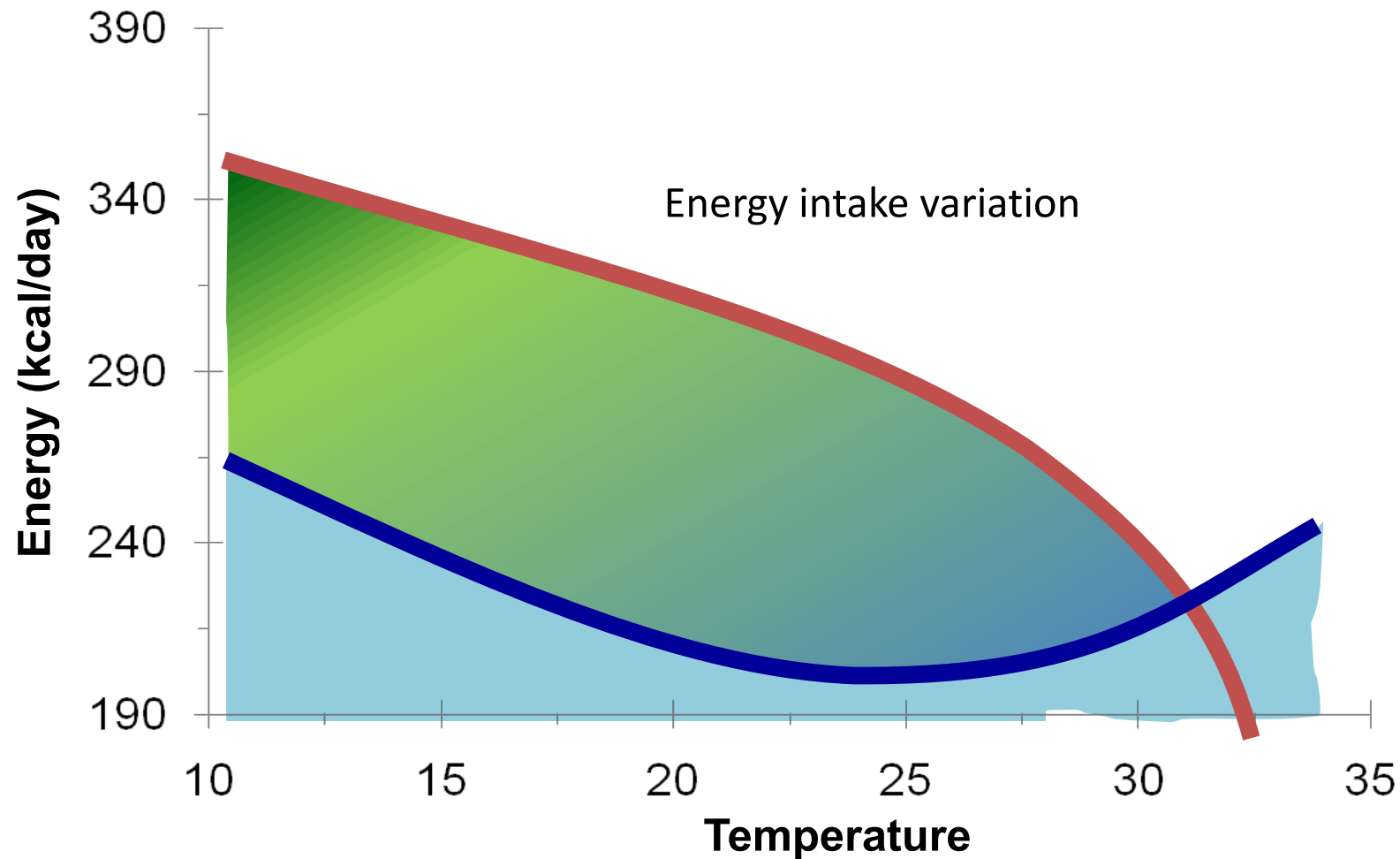
- Prepare the birds for the big step in feedintake in start production.
- Feeding in hot climat area´s
- Reduce select feedintake

Feed management

Prepare the birds for higher feedintake

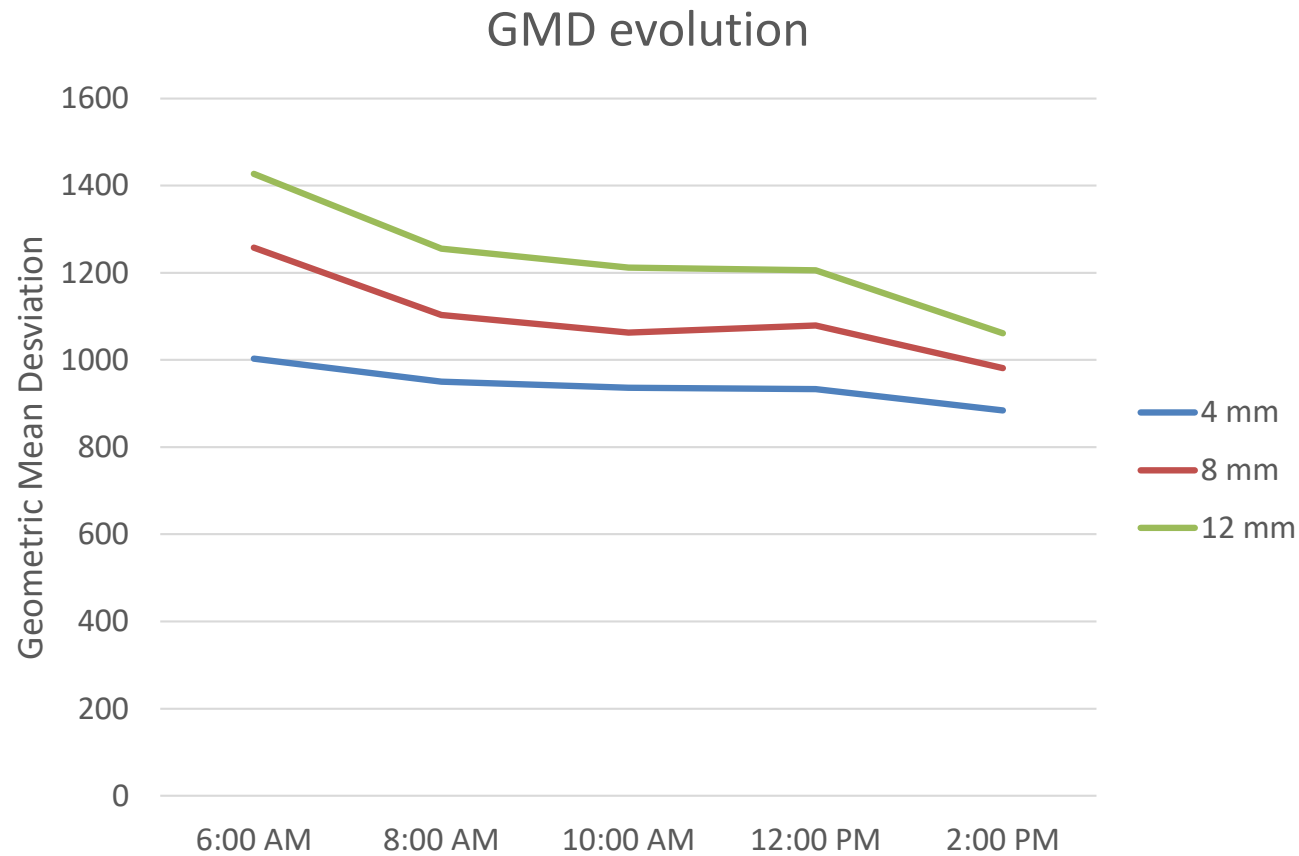
- We ask from our ps/layers to increase feedintake with a big step from the age of 16 weeks.
- Means from 60-70 grams at 16 weeks, to 115 grams in start of production.
- Change feed from rearing to production (Other feed, feedcompany, structure..)

Effect of the temperature (Hot-Climat)



Adapted from Leeson (2012)

Hens like big particles!!!



Adapted from Herrera et al
Poultry Science 97, 2018



Hens like big particles



Hens like big particles



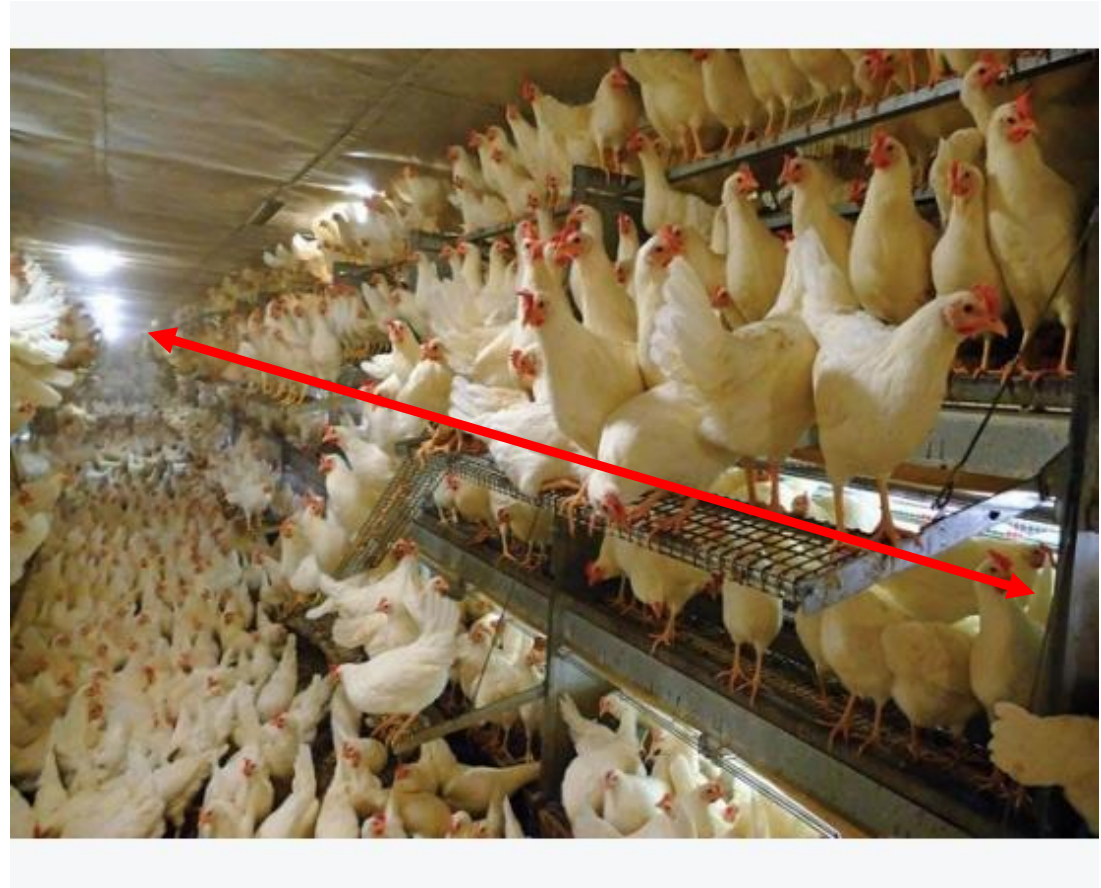
New Challenges

Does it work in ps/commercial
rearing/layer

farms, long feed chains &

high stocking densities ?

New Challenges



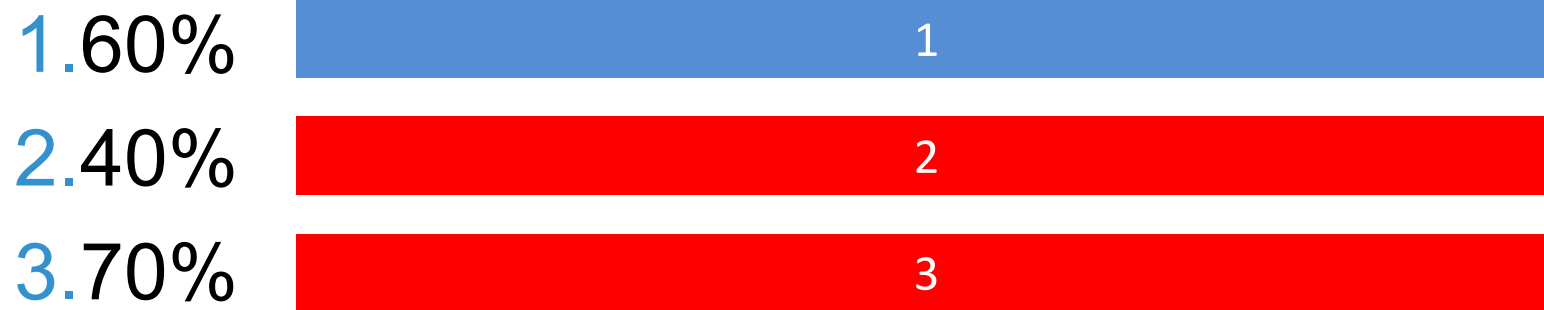
New Challenges



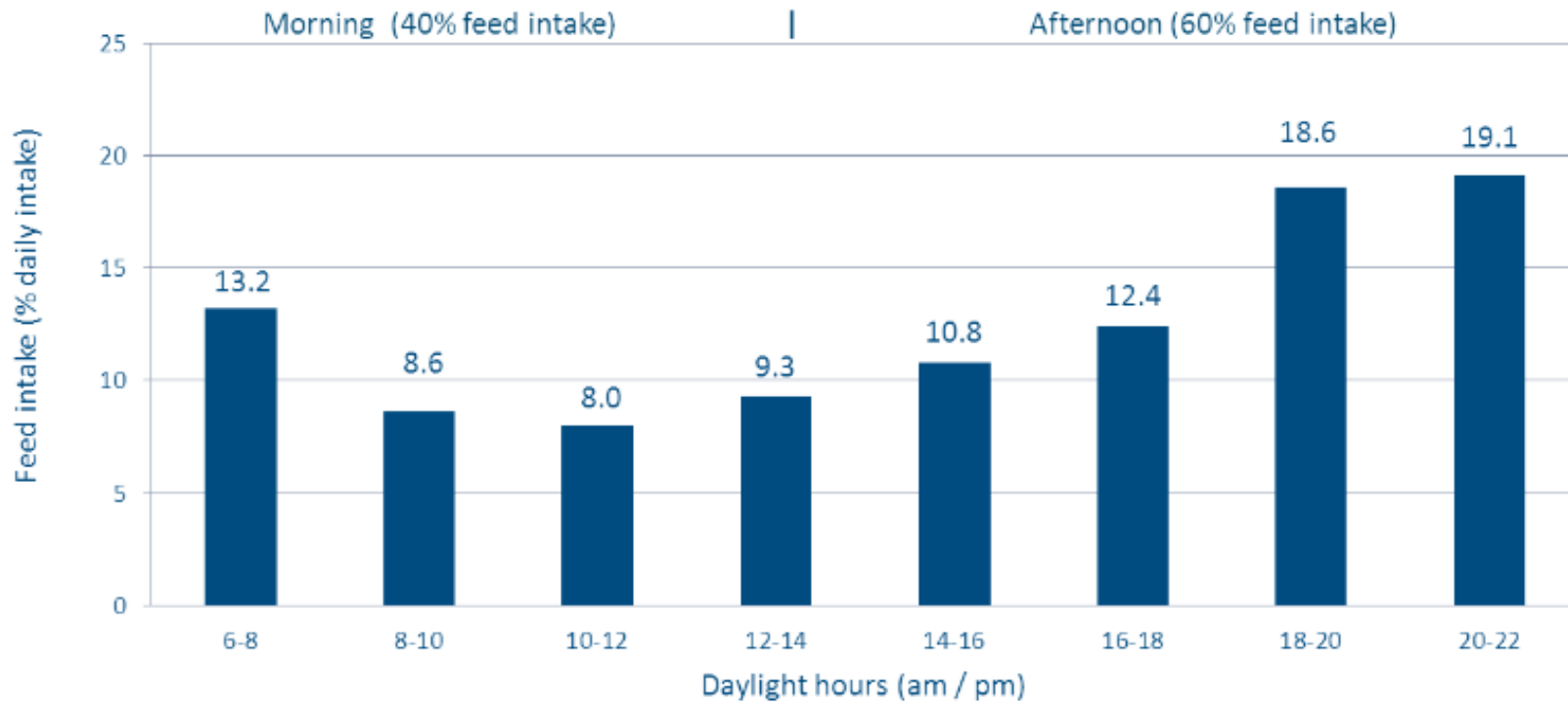
Free Range/Organic

- What are the birds eating and drinking outside the barn? (Free-Range/Organic)
- Can we give the birds the complete breakfast before we let them out of the barn?
- Governments, retailers, animal welfare organisations limit the time inside the Barn
Can we give our layers a good breakfast?

How many feed a layer is eating in the second part of the day?



How the birds eat during the day



Adapted from Keshavarz, 1998)



New Challenges



ne



Novatech

Untrimmed

New Challenges



Feed structure



- I don't like hard pallets ...
- I don't like hard and scharp granulate
- I don't like fine powder mashfeed
- I like courser **homogeneous mashfeed**



FEED STRUCTURE

Homogenous mash feed structure →
the basis for good & even feed and nutrient intake



Source: R. Pottgüter

What are they going to eat?



FEED STRUCTURE

Coarse crumbled feed, sold as starter feed!



Source: R. Pottgüter

What are they NOT going to eat?



Do we preferred a slow running feedchain?



Use the right feedingsystem

- Invest in feedchains
- Invest in fast speed feedchain. (>18 M/Min)
- Invest in flat bottom silos. (Structure feed!!)
- Invest in big transport augers or big feedhoppers

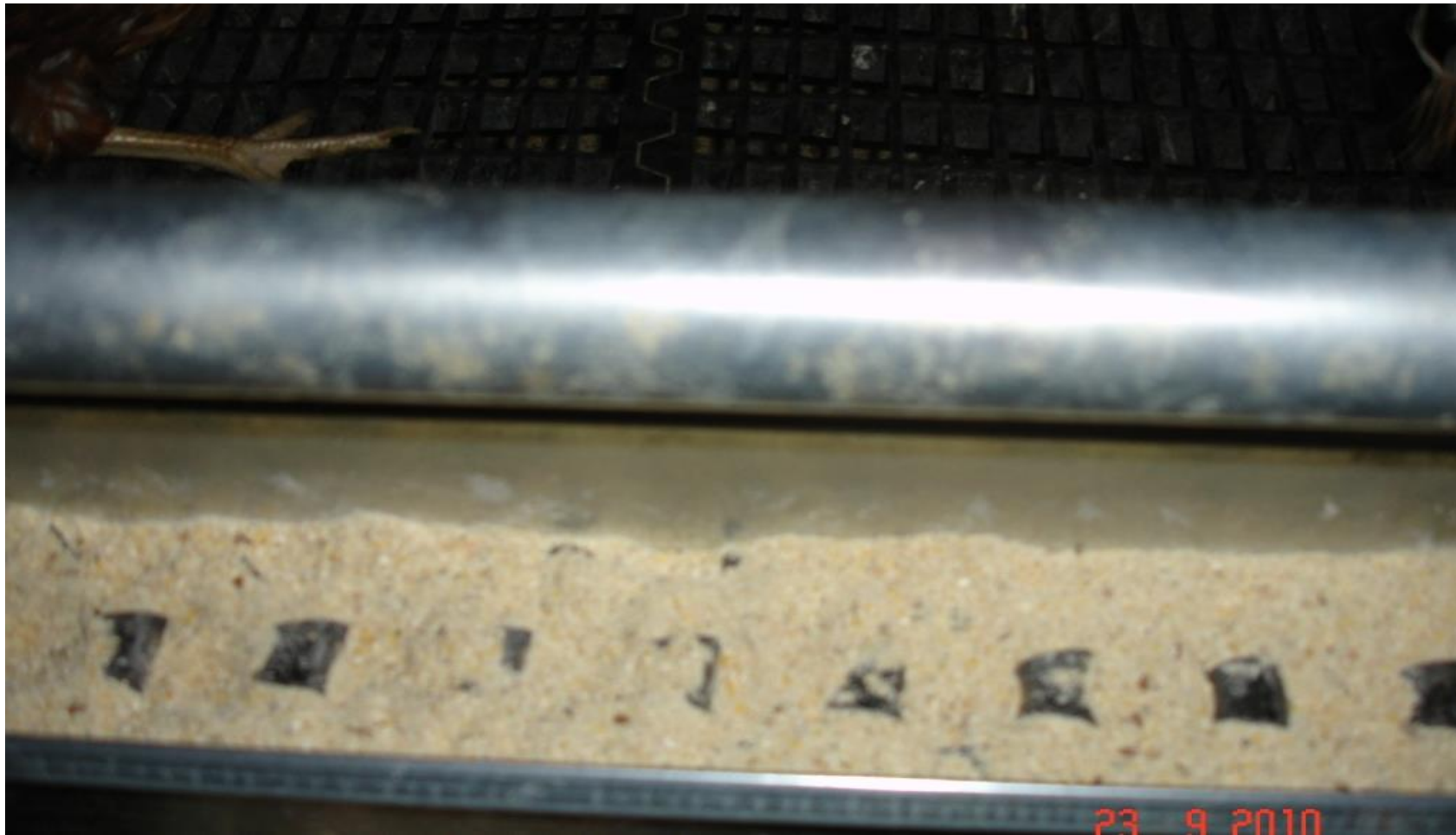
Use the right feedingsystem



When do we start with feedmanagement

- Best time is in rearing on a age of 3-4 weeks
- Start to empty the feeders first one or two times a week.
- Keep an eye on behaviour of the flock
- After one week we let them empty the feeders every day.
- Continue this after transfer to production

Empty the feeders ones a day!!



How long we want the have a empty feeder?

1. 30Min

1

2. 60Min

2

3. 1 Min

3

Empty the feeders ones a day!!



Where to look at!

- Litter
- Federcover
- Section
- Behaviour
- Bodyweight

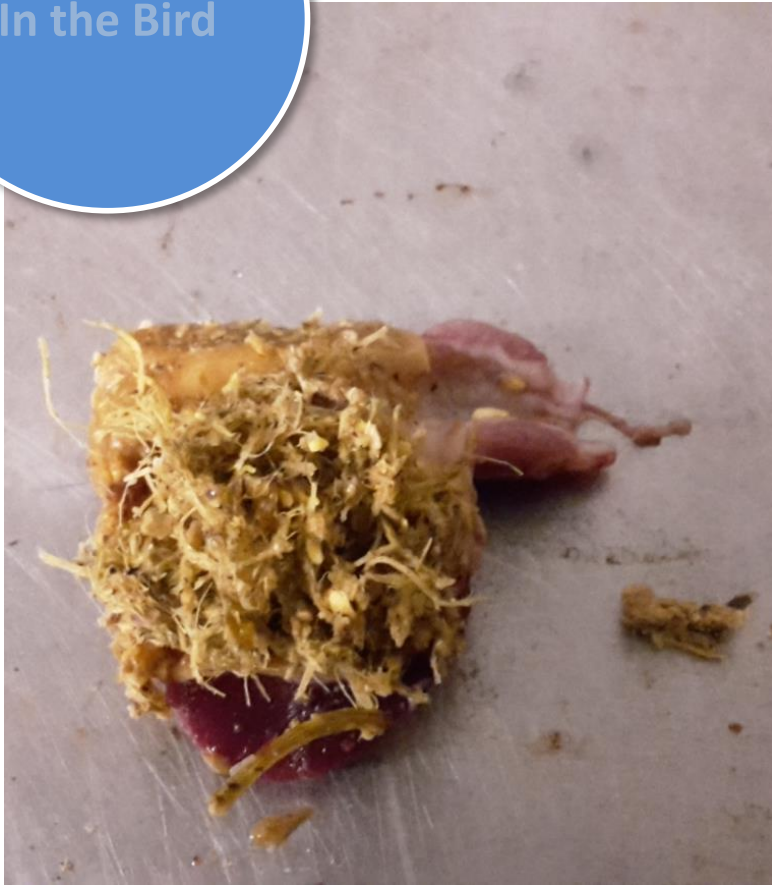
On the
litter



On the Bird



In the Bird



Behavior



Where and when to check bodyweight!!

Bodyweight



Alfalfa (Luzerne)



Alfalfa (Luzerne)

- Do we need to use Alfalfa?
- For what reason we need to use Alfalfa?
- When do we need to use Alfalfa?

Alfalfa (Luzerne)

- We don't use alfalfa to feed our birds!!!
- We use alfalfa to give us some extra eyes to see if everything is in good balance.
- When birds don't take alfalfa, they are in good balance.....
- Advise to use it in most stressful period!!
- In rearing 3-10 weeks
- In production 17-25 weeks

Alfalfa (Luzerne)

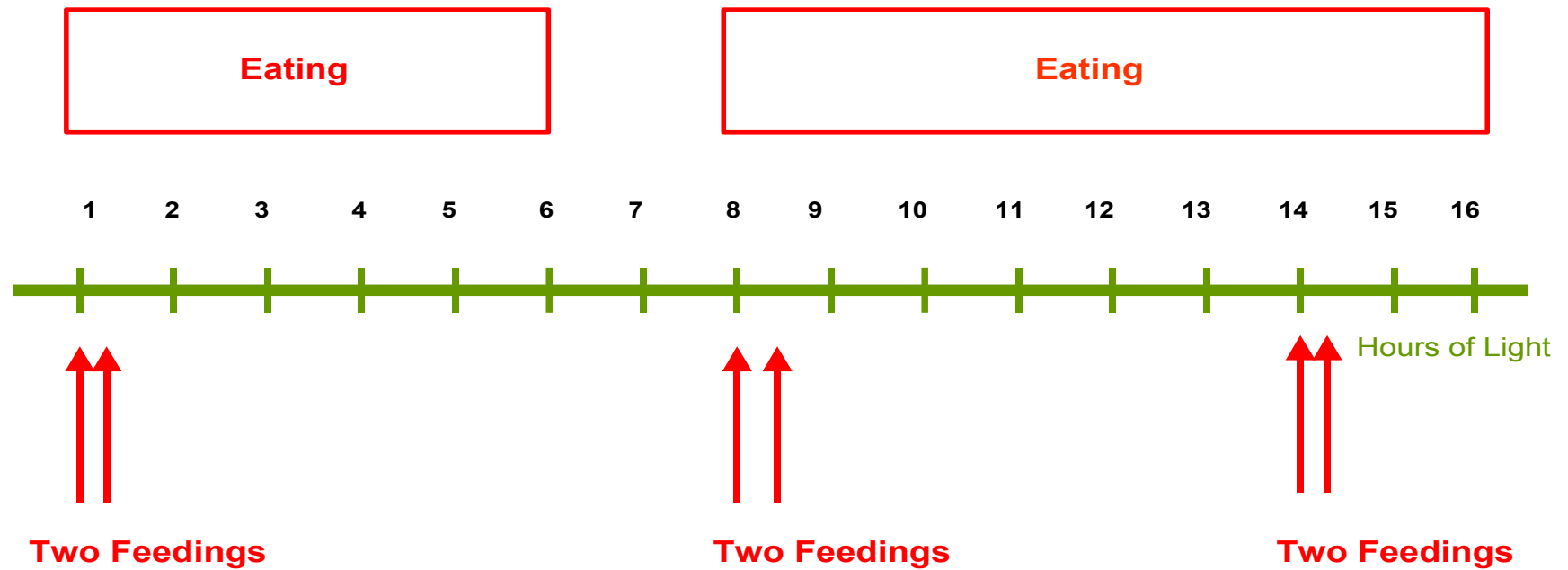


To Do!

- From week 4 in rearing start to train the chicks to empty to feeding troughs 2-3 times a week.
- Look at the behaviour of the chicks during this training (especially in cage free)
- From week 5 empty the feeding troughs every day.
- Continue this training after transfer in production!!!

Stack Feeding

(Example for Cage Housing with 3 Feeding Periods)



To-Do

- Good feed and feed management
- Observe the birds and they will “tell you”
- Rearing is the key to success

*An excellent manager will still be able
to perform with acceptable results
although
the circumstances are not perfect*

but...

*A manager with poor skills will be able
to,
even in a situation with the best
circumstances,
spoil the birds (& the results)!!!*

Questions????

