



INTERNATIONAL

The key to your profit!



Cage-Free Production

Leon Schouren

Global Technical Service

schouren@hn-int.com

Important for production

Important for alternative housing is:

- *Cleanness*
- *Rest*
- *Regularity*



Influences on Layer behavior



Light (Production)

Measure number of LUX, avoid bright light spots (feather pecking)
avoid dark spots (floor-eggs)



Light (production)

- Start to reduce LUX after piekproduktion.
- You can reduce lightintensitie with little steps every week. (slowly!!!)
- Start to swich off light (different levels) after laying period in second part off the day!! (Aviary systems...)

Lighting





Lighting

When you reduce LUX or switch off light to Fast!

- Drop off eggproduction (Molting!!)
- More system/floor eggs

Quality of water

- Every day fresh water
- Vaccinating or other additives by the water system
- Test the drinking water on a regularly base

Quality of water



Feed

- Structure of the feed.
- Feeding times
- Once a day feedthrough empty – „fresh feed“
- Make sure, that the feeding system never runs empty during a feeding-time.
- Speed of the feeder system

Feed



Nestbox management

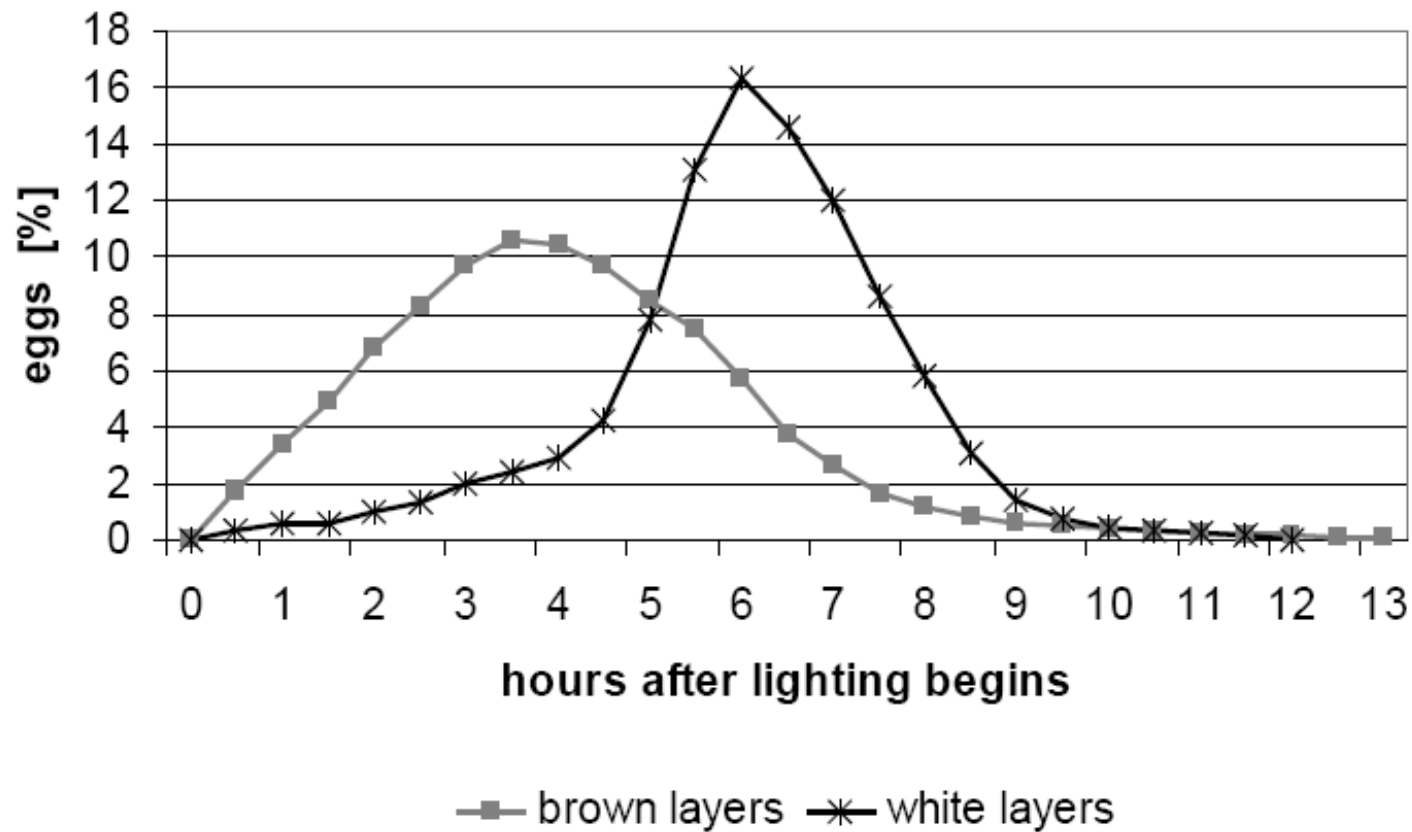
- Open the nestboxes a few hours before start of day

When something is not working, you have have some time to fix before start of production.

- Be there at start of production a few times a week, when lightperiod starts!!!

Nestboxmanagement

To remember !!!



Nestbox management



Nestboxmanagement

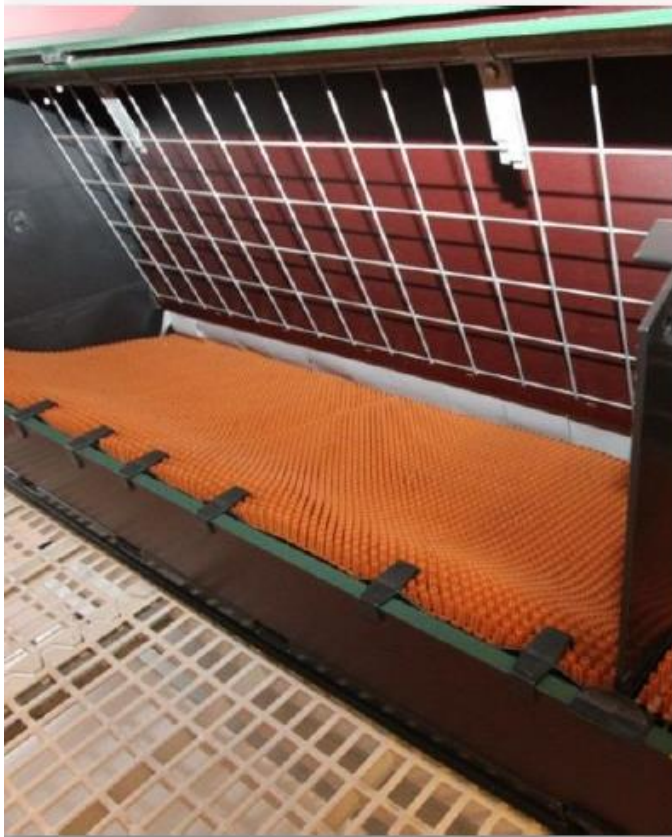
After piekproduction

- Close nestboxes for 10-15 Minutes (10-11 hours after switch on the light. (Stimulates the birds to go out)
- Start to close the nestboxes 15 minutes earlier every 1-2 weeks.
- Keep an eye on production, floor and system eggs...

Nestbox management



Nestboxmanagement



Nestbox management

Wrong use of the nestboxes!!!!!!

- *To hide (selection non productive layers)*
- *To rest, and produce manure (Dirty eggs)*

How can we prevent this wrong use?

Nestbox management

- Close the nestboxes for a short time in the afternoon, and stimulate the birds to go out.
- Use that time to look voor non productive birds.
- Start to close the nestboxes (after piekproduction) earlier at the end of the day. (Slow steps!!!!)



Oyster shells - as Ca-source



Extra / additional calcium supply



Extra / additional calcium supply



Hygiene

- Only necessary visitors
- Always with the necessary precautions.
 - *Shower*
 - *Clothes*
 - *Desinfection of footwear*
 - *Clothes / Footwear per house*
- Vermints / Rodents
- ***Don't forget the packaging material like trays etc!!***

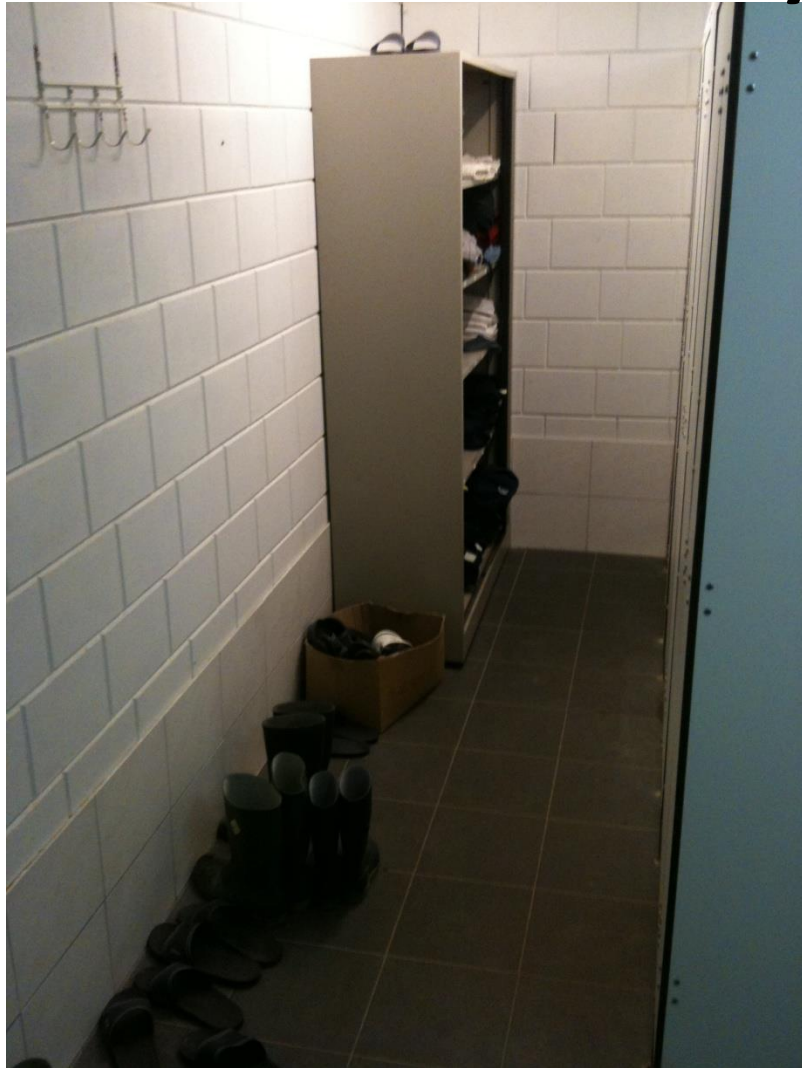
Hygiene



Hygiene



Hygiene



Climate

- Prevent unwanted disturbing airflow
- Close openings which are causing draught.

Climate



Climate



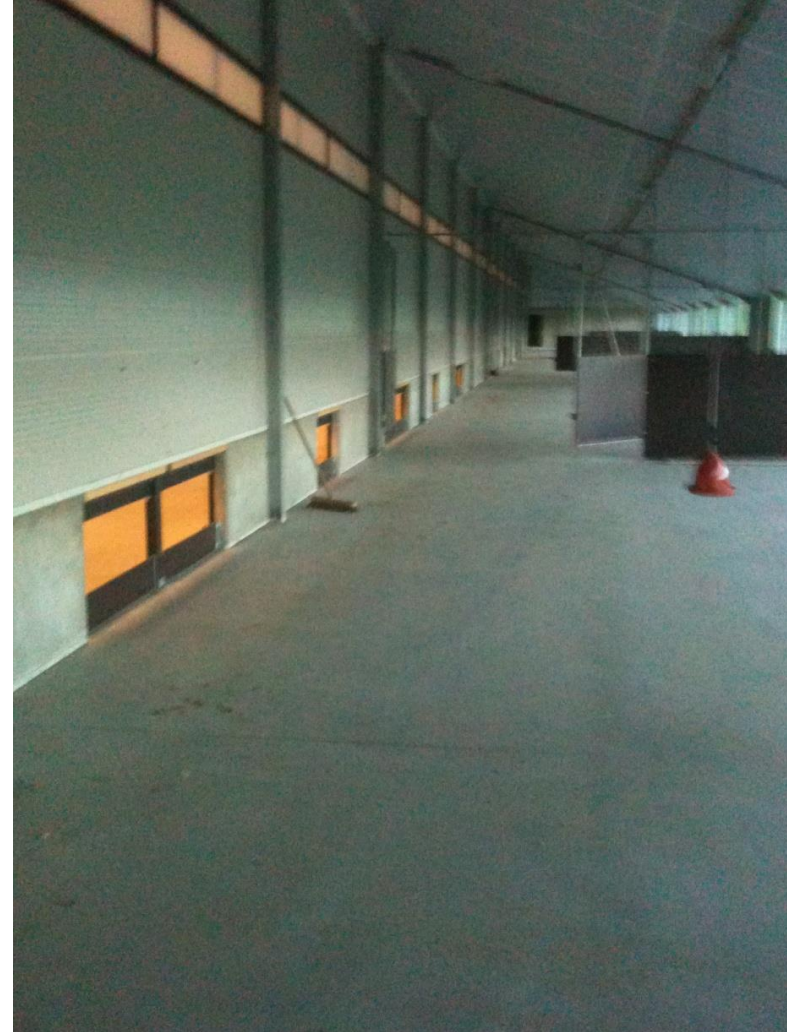
Climate



Climate

- Equal air-pressure system for Free-range and Organic

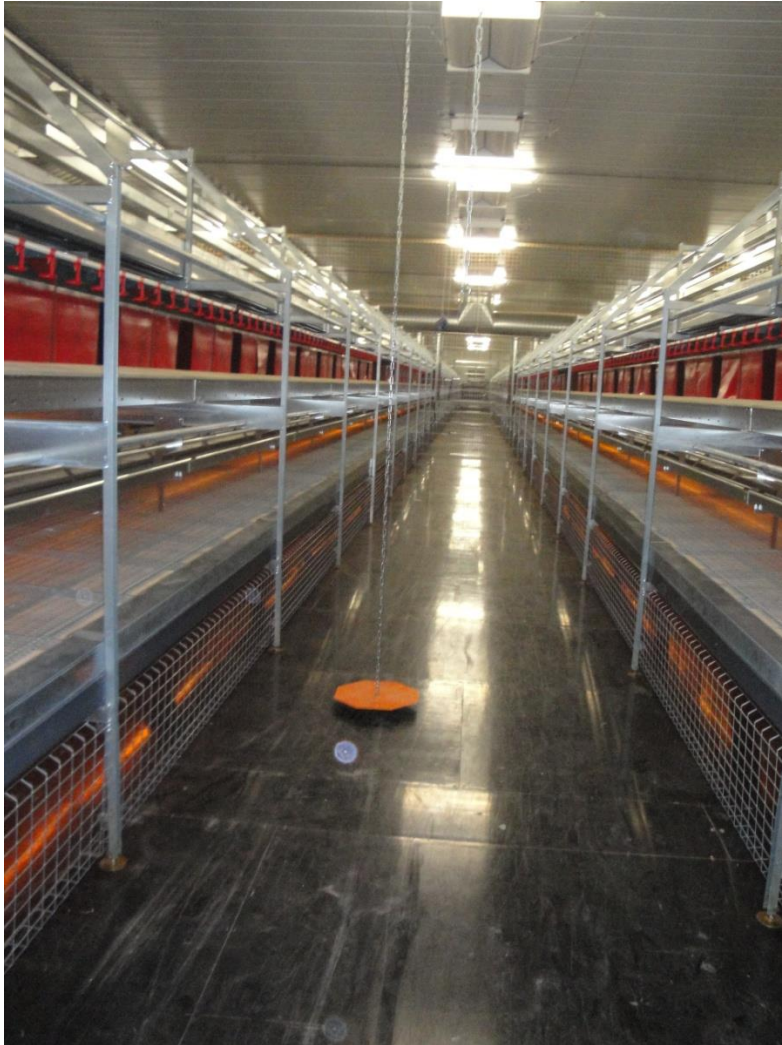
Climate



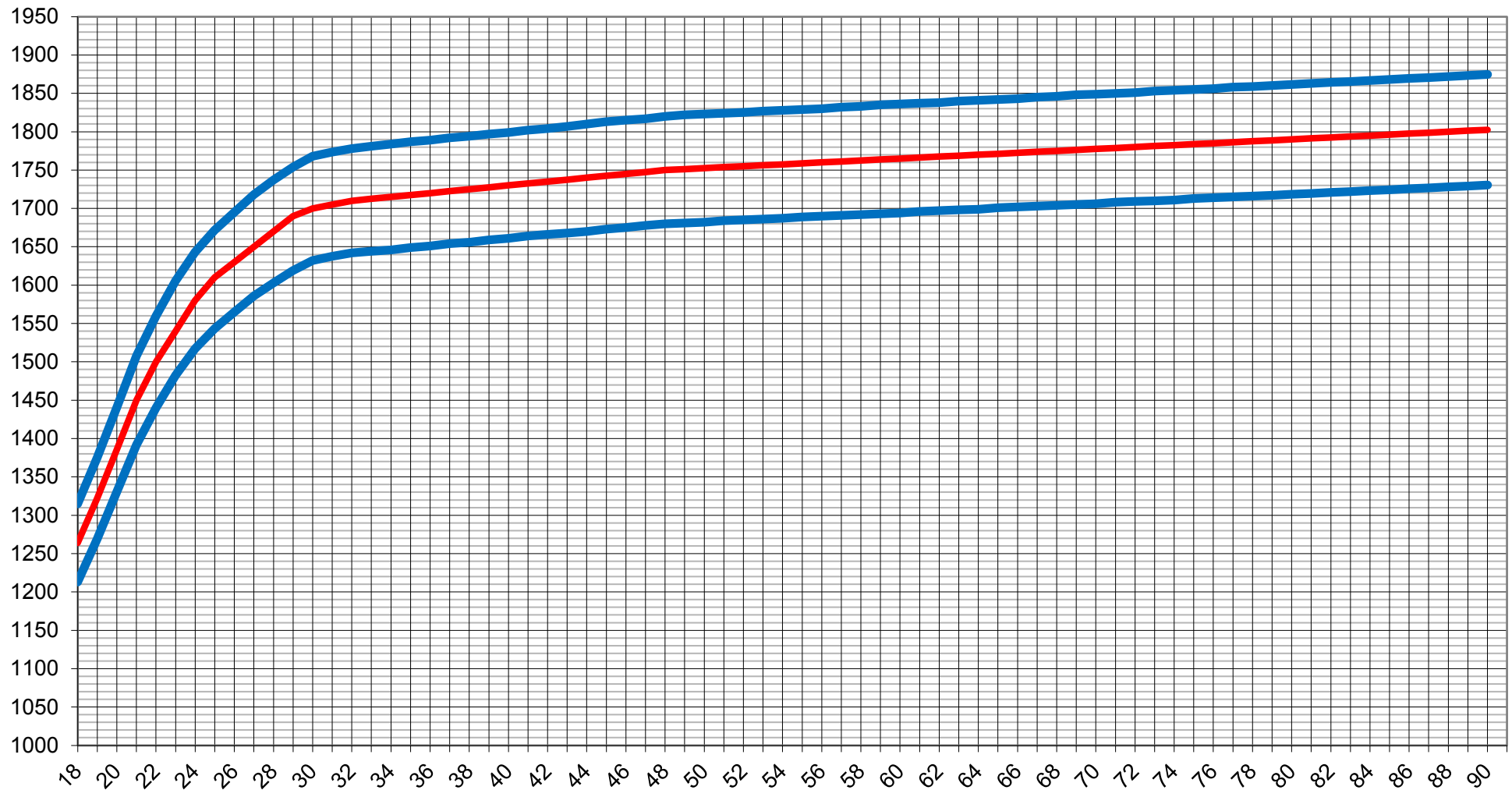
Further..

- Take (& store) feed samples on a regularly base
 - *And if necessary, investigate them.*
- Blood samples
 - *At arrival of the birds, and if necessary (IB – pressure for example), on a regularly base*
 - *Store them in an ordered manner and investigate them when requested*
- Bodyweight development – increasing
- Worms treatment
- Stomach stones – oyster shells.

Further.. Bodyweights



Further.. Bodyweights



Further.. Bodyweights



Red-Mite control

➤ Risks of mites:

- *E-coli*
- *Salmonella*
- *Post-peak production droppings*
- *Increase mortality*
- *Egg quality problems*
- *Floor eggs*
- ...

➤ That's why you have to beat the (red-)mites!

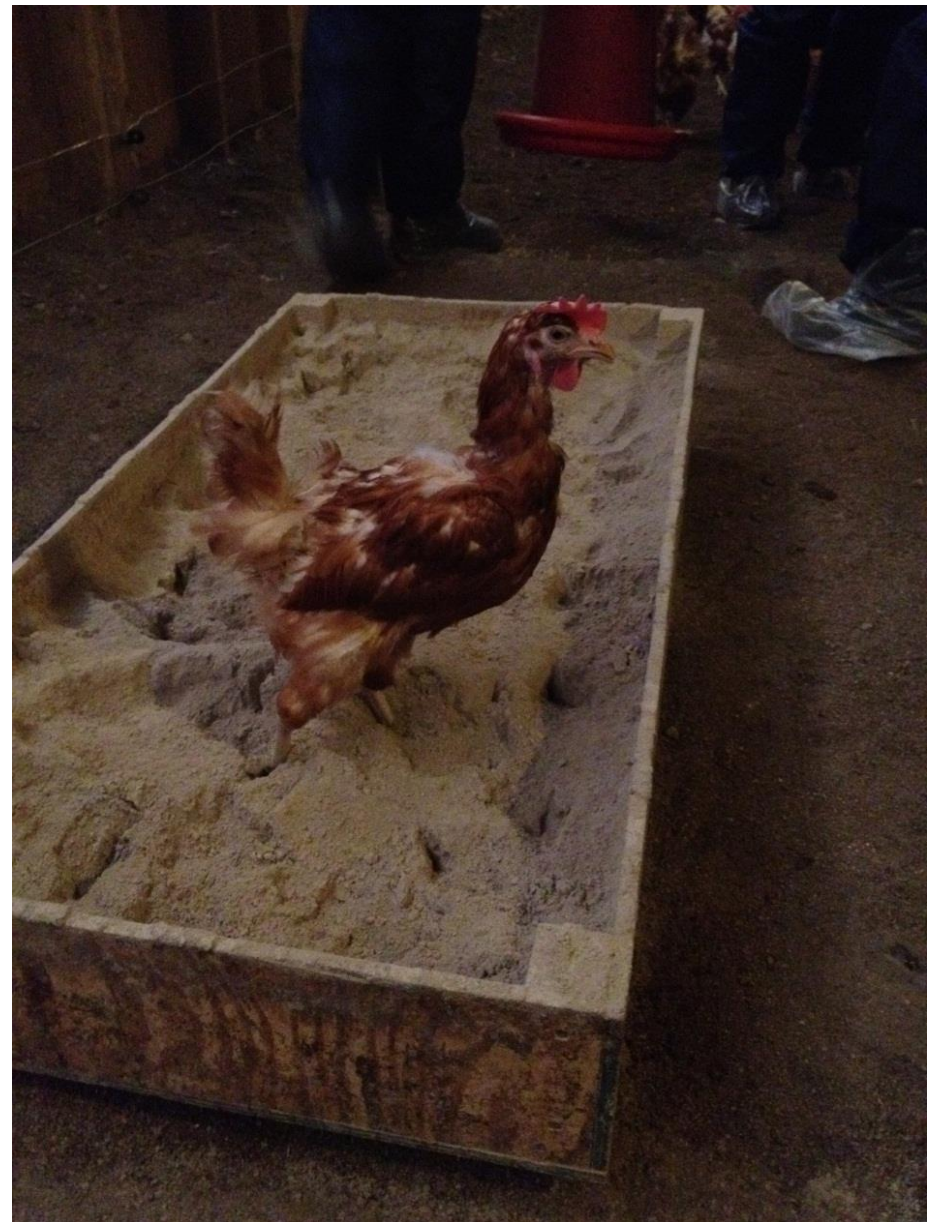
Red-Mite control



Red-Mite control



Red-Mite control



Ranging area

- Cleaning of the ranging area when the house is empty
 - *Removing & changing soil (in case of related diseases)*
 - *Desinfection (Quick lime)*
 - *Type of hardening*
 - *Prevent waterintake outside*
 - *Shelter for the layers outside (Wild birds!)*
 - *Short cut grass*

Ranging area



Ranging area



Ranging area



Ranging area



Further..

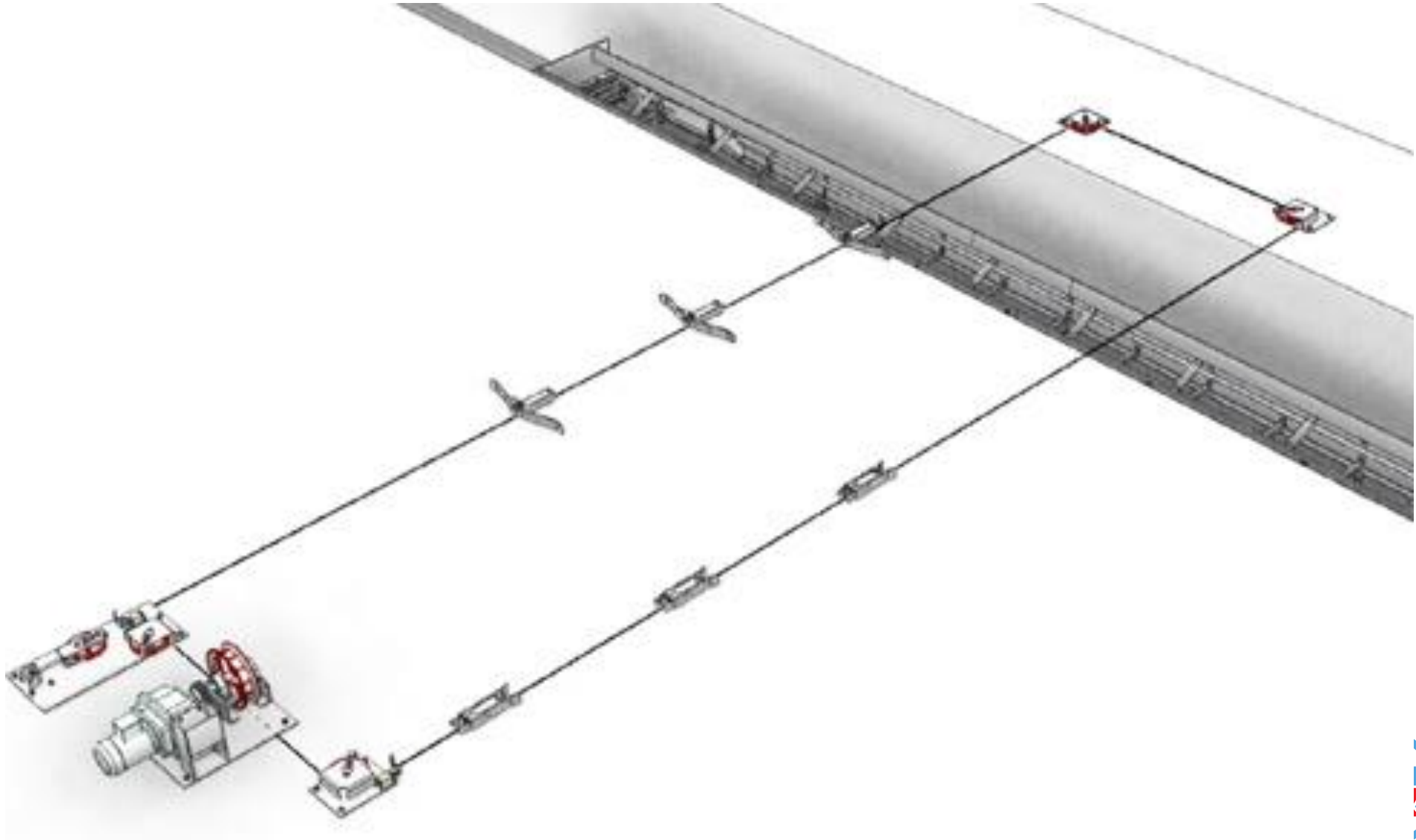
➤ Litter removal:

- *Prevention off floor eggs and easier to find floor eggs*
- *Especially white, but also brown layers*
- *Better climat (Ammonia)*

















Conclusion

An excellent manager will still be able to perform with acceptable results although the circumstances are not perfect

but...

A manager with poor skills will be able to spoil the birds (& the results) even in a Situation with the best circumstances!!!

Questions????



Thank you for your attention!

