



INTERNATIONAL

The key to your profit!



Cage-Free Rearing 0-17 weeks

Leon Schouren

Global Technical Service

schouren@hn-int.com

Important for rearing

Important for alternative housing is:

➤ *Cleanness*

➤ *Rest*

➤ *Regularity*



Sytem – in general

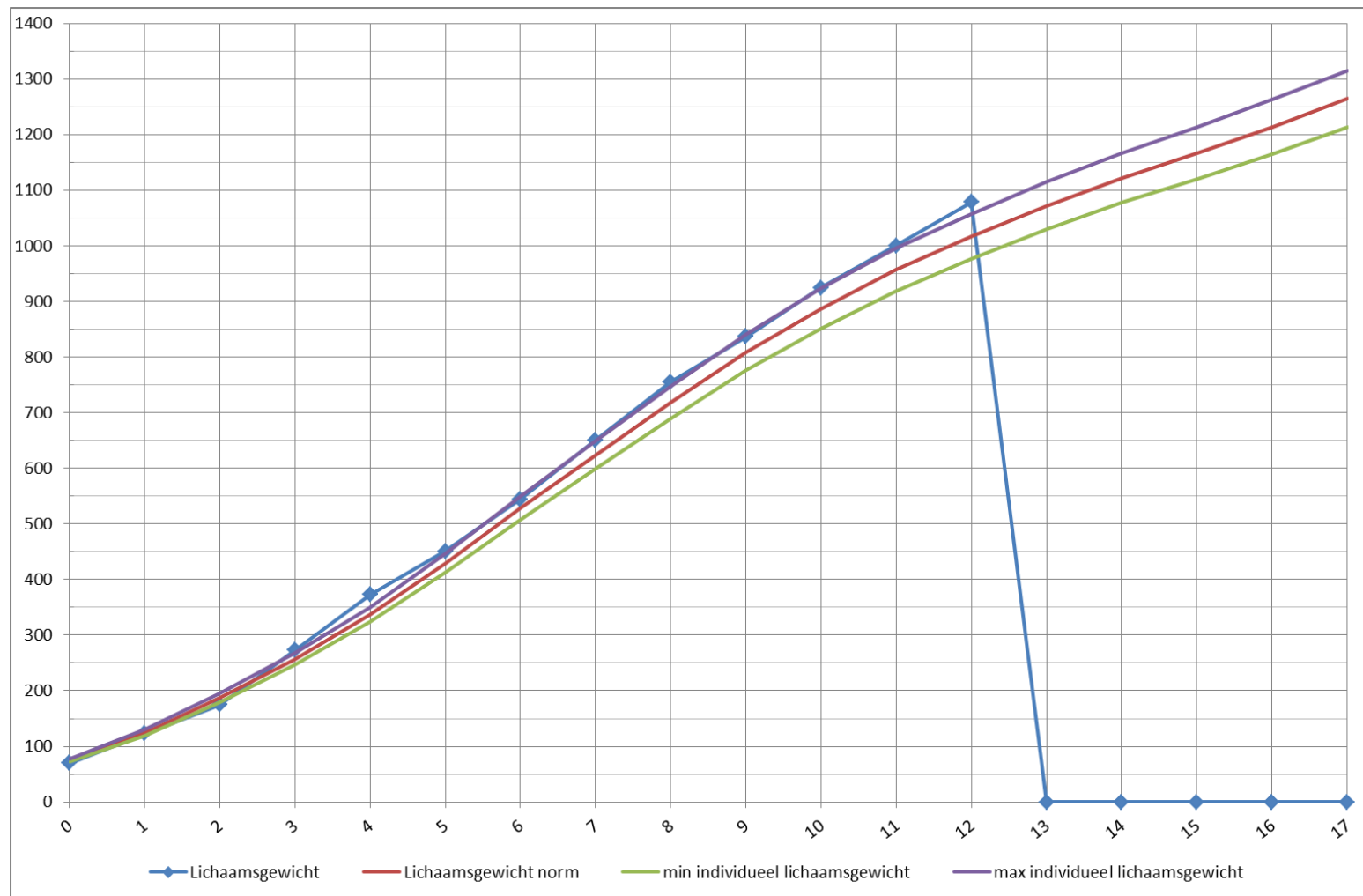


The layers need to move easily throughout the system for feeding, resting and hiding and use all the 'livable space', so the density throughout the system is about the same

Development of the chicks

- The birds (and not only ours!) has one big genetic failure: They can't read!
 - *No managementguide*
 - *No lighting program*
 - *..*
- Therefore, it is the pulletgrower who has to determine if everything is „on track“:
 - *Take bodyweights from 1st week onwards, once a week*
 - *Not necessary to take individual BW, only if necessary.*

Development of the chicks



Development of the chicks

- Take note of the guidelines for the lighting program.
Determine your strategy before placement, but stay flexible!
- From the 4th week of age onwards, the feeding system should run empty at least once a week - better would be every day. This is to ensure that the birds receive fresh feed every day which prevents selective feed intake.
- Drinking lines shouldn't swing (*in situations where drinking lines are winched*)
- Please ensure that there is a sufficient level of oxygen in the barn.
- The barns must be ventilated so that the CO & CO₂ levels are not too high.

Development of the chicks

- Chicks must learn to move within the system.
- We would like to train all (100%) pullets.
- Don't train to much, and don't train to less!!

Development of the chicks

- Start training with lighting (Dimming period)
as soon as possible after the 14 day intermitten lighting program.
- Let the chicks out of the system a.s.a.p.
Not later then 3-4 week (Dependent type of system)
- Be aware of situations with paracocc vaccinations, recycled paper!!

Development of the chicks



Development of the chicks



Development of the chicks

- To high stocking density (overcrowding) is very often a reason for problems with flocks which don't get to bodyweight standard and bad uniformity.
- Adjust daily rhythms (start day!!)
This prevents floor eggs in production.
 - *Be aware of light influence of outside!*
- Contact with the litter is important for all animals.

Development of the chicks

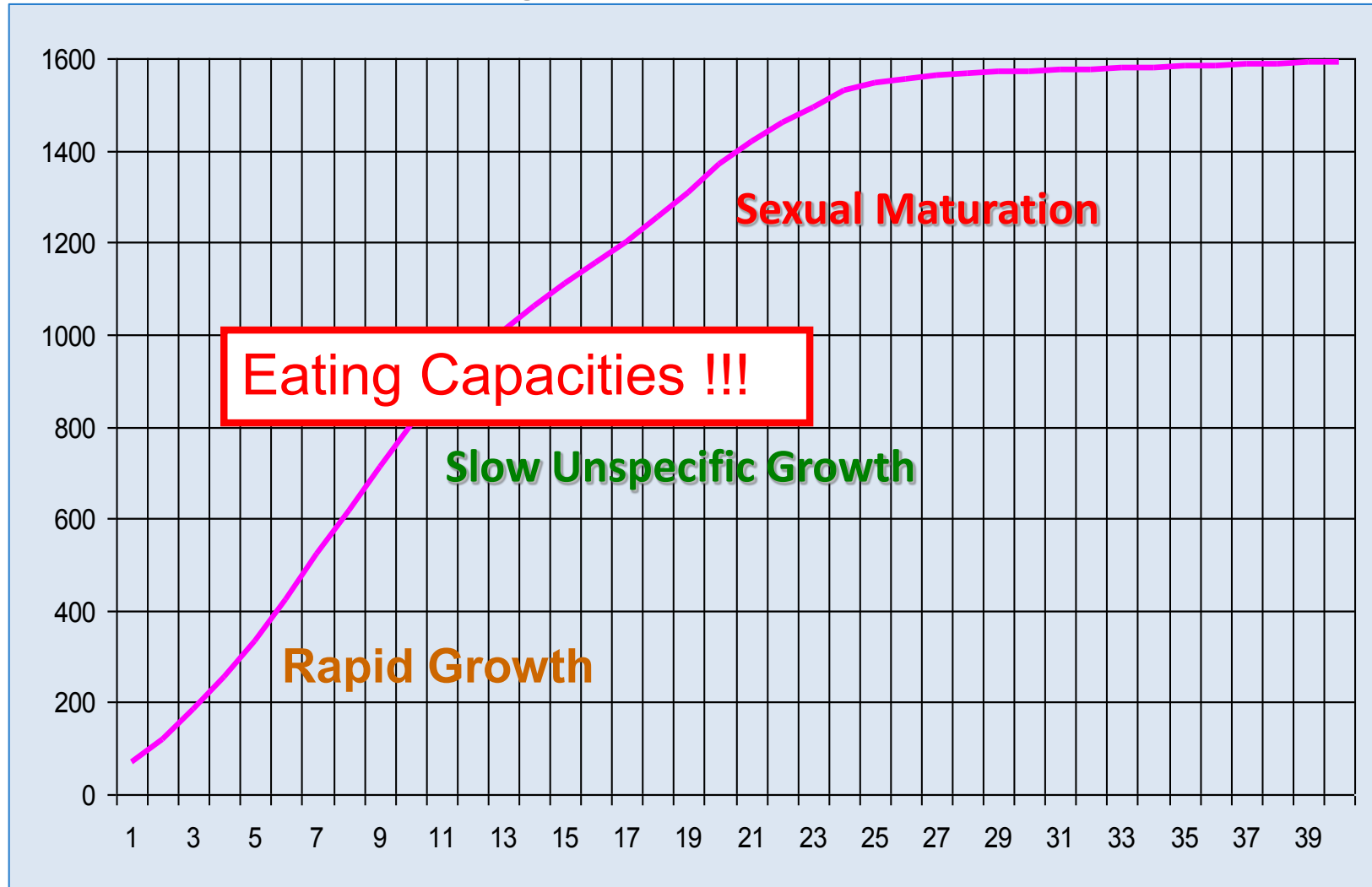
- At each change, check on the behaviour of the pullets and how they react to the change
(e.g., by increasing the height of the drinking lines)
- Very important: make sure that 100% of the pullets are active!
- It is very important that **ALL** the pullet move upwards or to the perches every night.

Development of the chicks

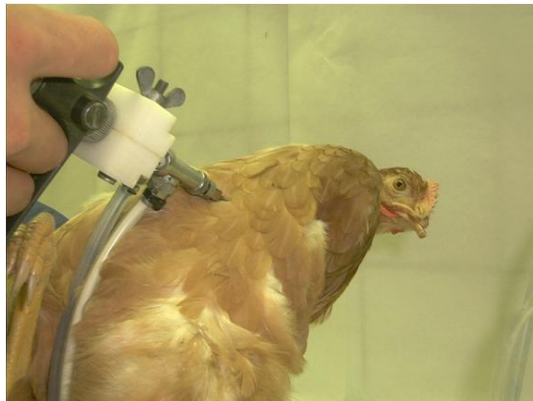
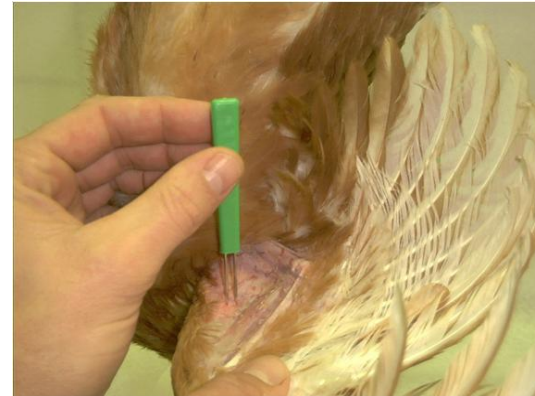
- Contact with the litter is important for all animals.



Development of the chicks



Vaccination Program



Discuss with local veterinarian for best choice, also
looking
at economic benefits

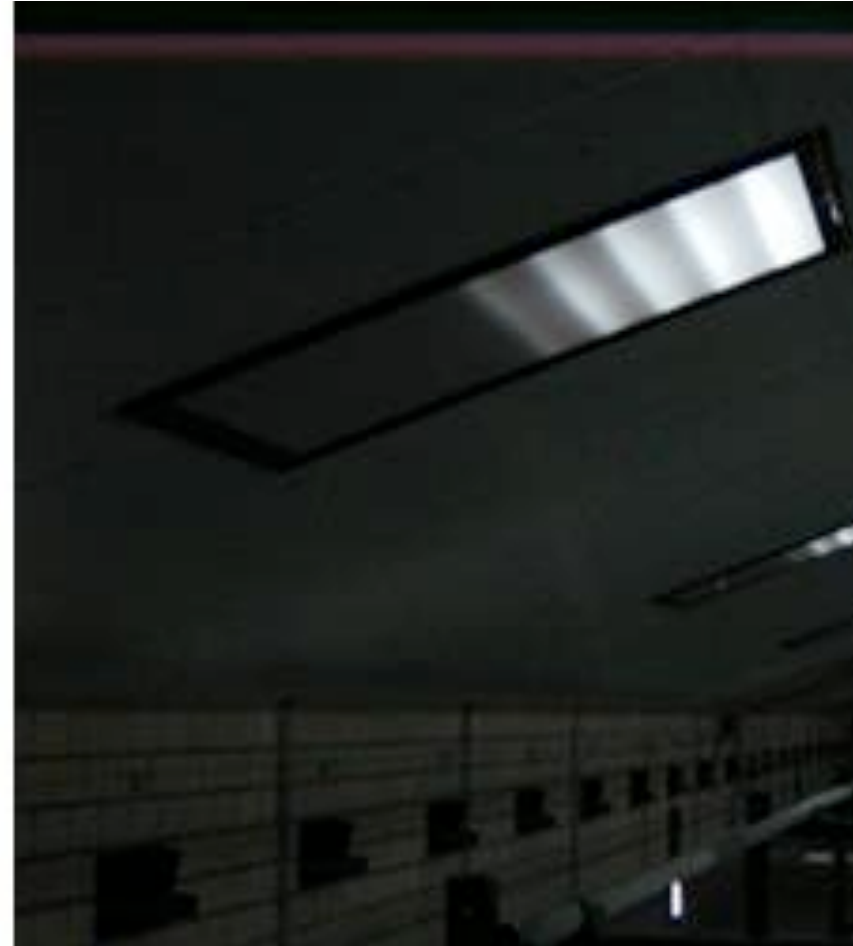
Preparing

- Visit the pullets during the rearing period
- Placement of the birds at the right time!
- Important: Bodyweight & uniformity of the birds
- Light intensity and day length

Light



Light



Light

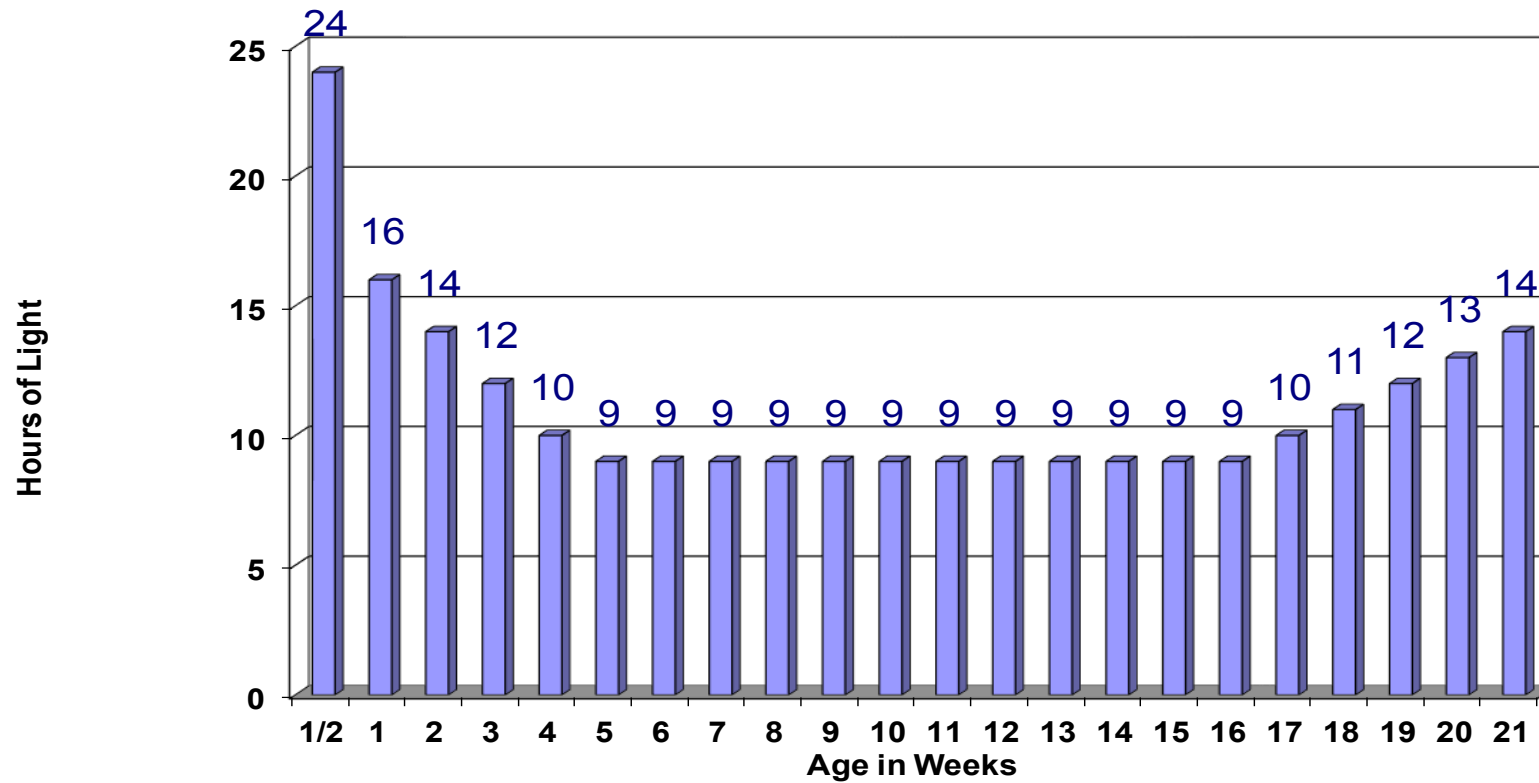


Light (Rearing)

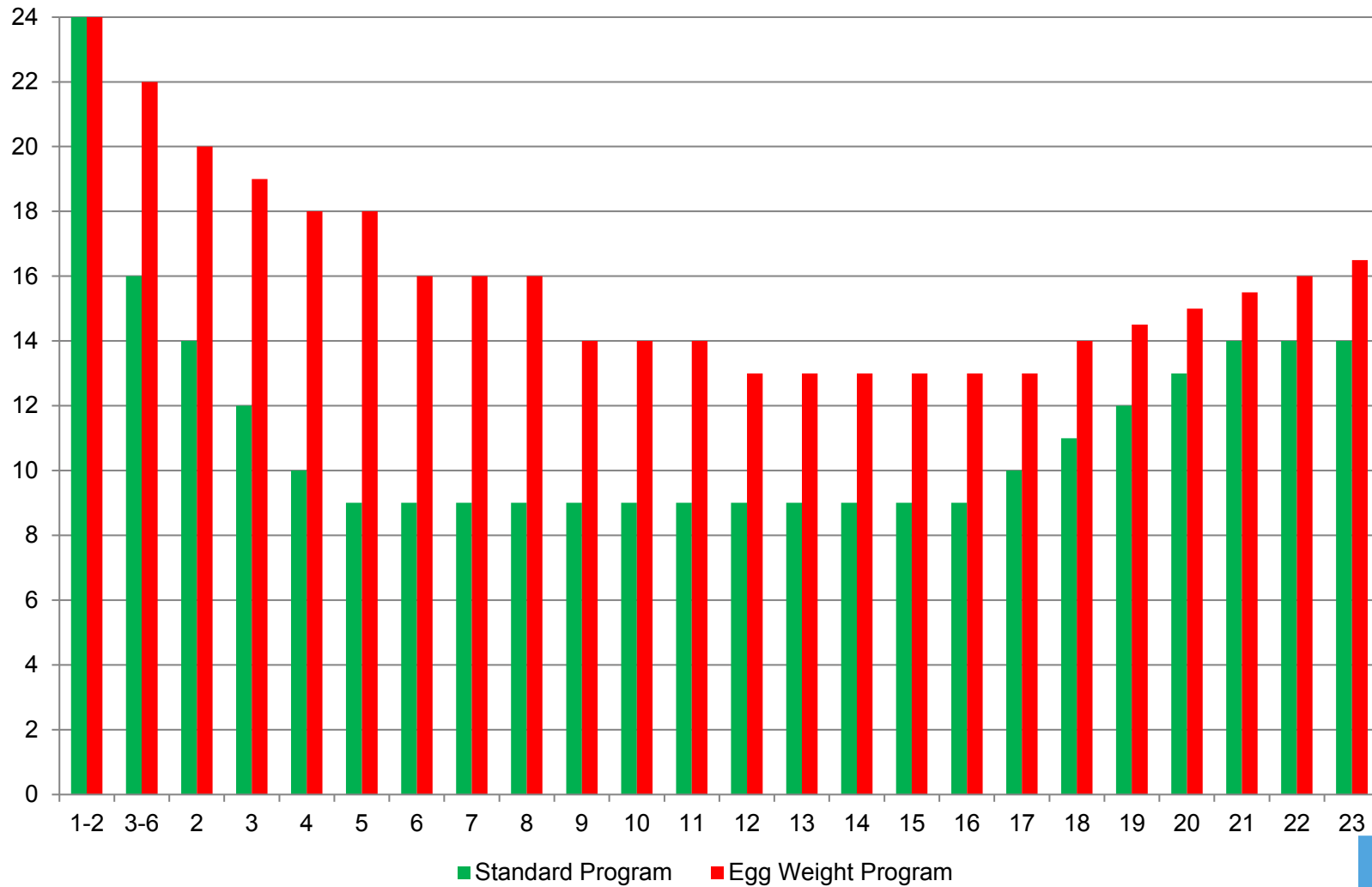
Measure number of LUX, avoid bright light spots (feather pecking) Min 15 LUX in rearing for brown pullets and 10 LUX for white pullets!!!!



Standard Lighting Program



Lighting Program for High Egg Weights ???



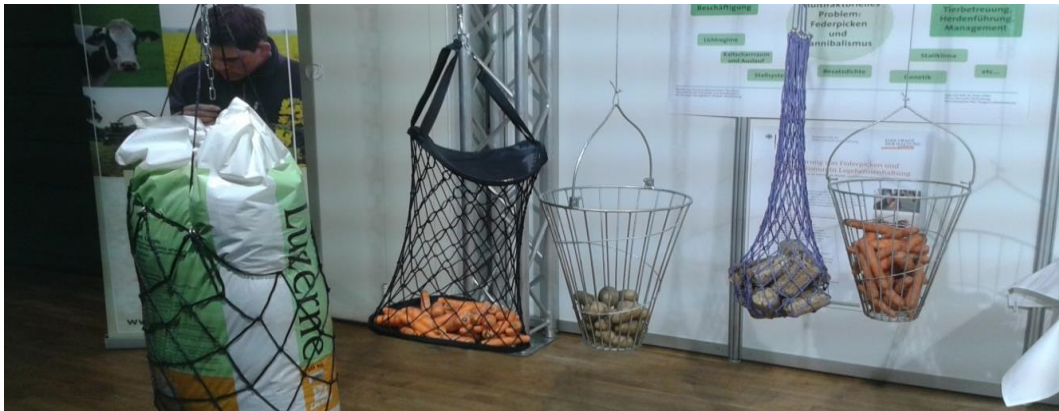
Feedmanagement

Does it work in commercial
rearing/layer
farms, long feed chains &
high stocking densities ?

Feed



Enrichment



Dry litter to keep the hens busy



Alfalfa (Luzerne)



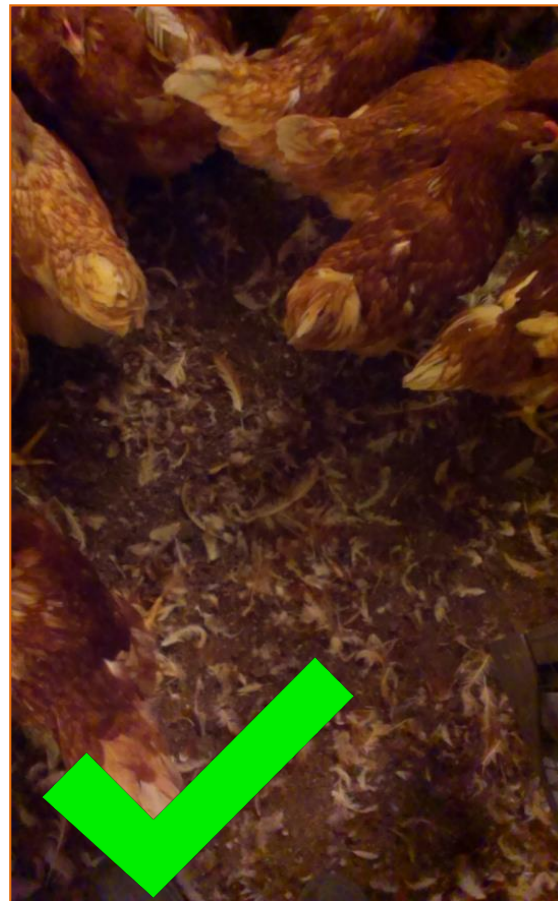
Alfalfa (Luzerne)



Alfalfa (Luzerne)

- Do we need to use Alfalfa?
- For what reason we need to use Alfalfa?
- When do we need to use Alfalfa?

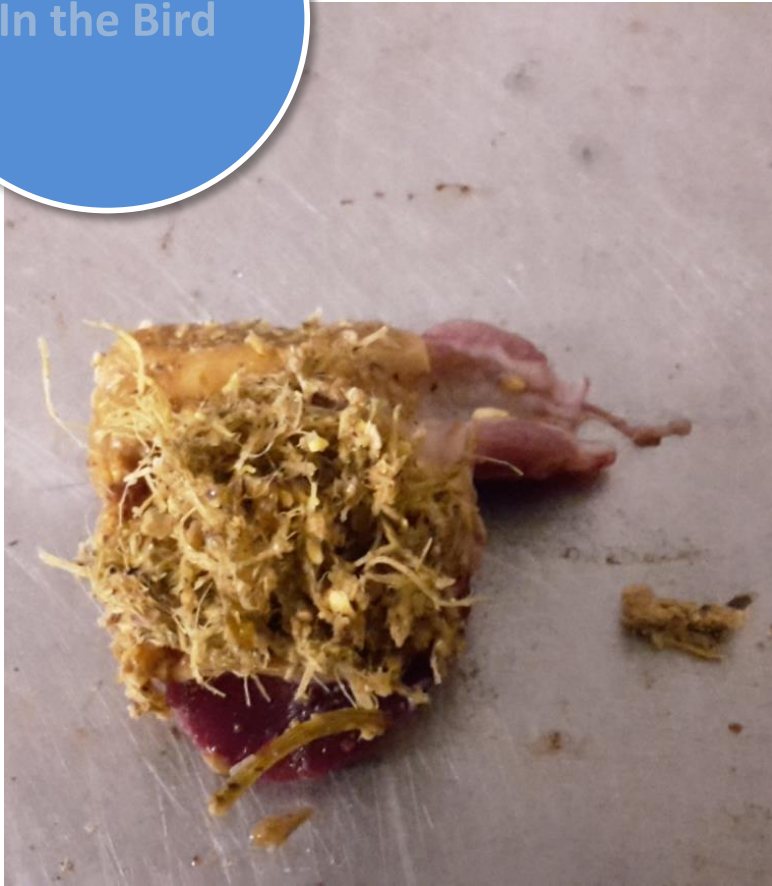
On the
litter



On the Bird



In the Bird



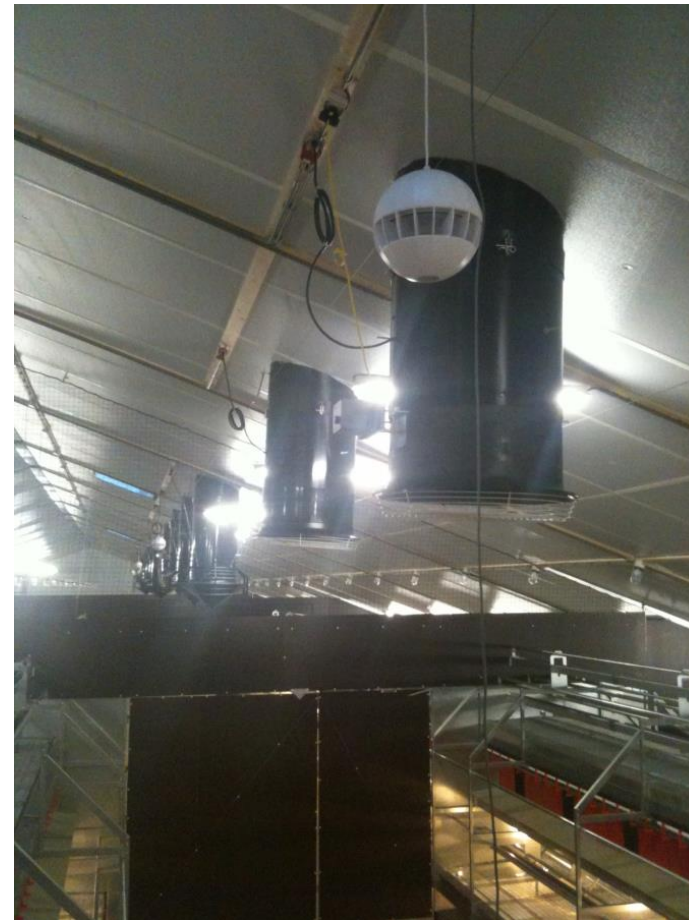
Quality of water



Music!



Music



Farmmanager

WATCH the
litter!

LOOK at
the birds!

RECORD
DATA!

ACT in case of
a problem!

CONTROL
the feed!

Conclusion

An excellent manager will still be able to perform with acceptable results although the circumstances are not perfect

but...

A manager with poor skills will be able to spoil the birds (& the results) even in a Situation with the best circumstances!!!

Questions????

